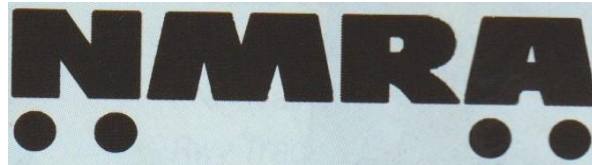




# The Whistle



OFFICIAL PUBLICATION

COWCATCHER DIVISION 1 LONE STAR REGION NMRA

VOL 10 NO 4 APRIL 2026

## TABLE OF CONTENTS

DIRECTOR'S REPORT	1
LEADERSHIP TEAM	2
DATES TO REMEMBER	4
TRAIN SHOWS	4
TREASURERS REPORT	5
TRIVIA QUIZ	5
AREA MODEL RAILROAD CLUBS	6
HOBBY SHOPS	7
RAILFAN VIDEO OF THE MONTH	5
SHOW AND TELL	8
CLINIC PHOTOS	13
THIS MONTH'S CLINIC	15
NMRA 2026 NATIONAL CONVENTION	18
HISTORY OF RAILROADS IN TEXAS PT 4	16
LSR 2026 CONVENTION	19

APRIL'S MEETING WILL BE SATURDAY 11 APRIL AT THE TEXAS WESTERN MODEL RR CLUB AND VIA ZOOM.

SEE EMAIL FOR ZOOM LINK

## DIRECTOR'S REPORT

I trust everyone had a wonderful Easter and was able to spend some quality time with the family.

Last month we had a very informative meeting, and I want to thank Mike Ross for a very educational clinic on how to use Pan Pastels to paint and weather their models. This month's clinic will be presented by Mike Walters, and it will be on scratch building a railroad station.

The Promote the Hobby effort is making great progress; we now have a completed acrylic cover for the diorama and Duane Richardson will finish the wood base in April. Darrell Cowles will then add landscaping to

*Cont on page 3*

*The Whistle Apr 2026*

*Page 2*

**LEADERSHIP TEAM**

**DIRECTOR**

DICK BRANNAN

**SECRETARY**

JOHN "TRAPPER" KIRKPATRICK

**TREASURER**

DAVID GREIN

**PROGRAM MANAGER**

HAROLD BERENZWEIG

**ASST PROGRAM MANAGER &**

**TRAIN SHOW COORDINATOR**

RUSSELL GIFFORD

**OPERATIONS MANAGER**

JIM DAVIS

**ASST OPERATIONS MANAGER**

DAVID RANNEY

**ACHIEVEMENT PROGRAM ADVISOR**

MIKE MACKEY MMR

**NEWSLETTER EDITOR**

ROBERT "BOB" MANGRUM MMR

**CONTEST ADVISOR**

CASEY AKIN

**CONTEST ADVISOR**

CODY AKIN

**NORTH TEXAS COUNCIL OF TRAIN  
CLUBS REPRESENTATIVE**

DICK BRANNAN

**MEMBERSHIP COORDINATOR**

MIKE ROSS MMR

**ASST MEMBERSHIP COORDINATOR**

DAVID CRUMPTON MMR

**SERGEANT AT ARMS**

DON ROWE

**VIDEOGRAPHER**

DAVID KRANDA

**COMMUNICATION COORDINATOR**

ERIC SMITH

**WEB MASTER**

JARED ROBERTS

FOR CONTACT INFO SEE  
COWCATCHER DIVISION WEB SITE

<https://cowcatcherdivision.org/>



*The Whistle Apr 2026 page 3*

DIRECTOR'S REPORT CONT.

the scene, and it will be ready to display in libraries complete with a QR code. Scanning the QR code will lead to an introductory page to model railroading and the Cowcatcher Division. Dave Steckler has arranged for the "Promote the Hobby" canopy to be displayed at Bedford festival in December which typically has 3,000 to 4,000 attendees.

As you may recall the Division had a table at Train -A-Plooza in Grapevine. There were 1900 paid attendees at this show and the Division at six serious inquiries about NMRA membership. I want to thank Jim Ogden, Dave Steckler, Mike Walters and Mike Ross for contributing to this effort. This show continues to grow in attendance, and we have secured another table for 2027.

Last month the layout tour went to Dan and Wyatt Cook's Calhoun Bend Subdivision and everyone attending was treated to an extremely well-done model railroad. Dan, thank you for hosting!

This month's layout will be equally interesting, so please attend the meeting to find out who is hosting the open house.

The LSR Convention, 2026 Connections, is coming up fast. It is from June 18 to 21 st in Austin, don't forget to register.

We will have a great April meeting, hope to see you there and remember to bring a friend.

Dick Brannan

Director Cowcatcher Division



*The Whistle Apr 2026 pg 4*

## **DATES TO REMEMBER**

### **REGIONAL TRAIN SHOWS**

THURSDAY TEXAS WESTERN RR CLUB BUSINESS MEETING FOR MEMBERS AND PROSPECTIVE MEMBERS ONLY

7 pm -9 pm 6808 FOREST HILL DR.

FOREST HILL, TX 76140

#### **APRIL 2026**

24-25 GREATER TULSA AREA TRAIN SHOW

25-26 RAILFEST GALVESTON RR MUSEUM

25-26 NEW BRAUNFELS TRAIN SHOW

#### **JUNE 2026**

13-14 TYLER AREA TRAIN SHOW

18-21 LSR CONVENTION AUSTIN



June 18-21  
Wyndham Garden Austin  
3401 South IH-35

#### **JULY-AUGUST 2026**

27 JULY-2 AUGUST

NMRA NATIONAL CONVENTION

CHATTANOOGA



#### **AUGUST 2026**

29-30 AUSTIN TRAIN SHOW

#### **SEPTEMBER 2026**

19-20 TEMPLE MODEL TRAIN SHOW

26-27 PLANO TRAIN SHOW

## TREASURER'S REPORT

BEGINNING BALANCE	\$4720.09
RECEIPTS	\$564.00
EXPENDITURES	\$1137.83
END BALANCE	\$4146.26
CERTIFICATE OF DEPOSIT	\$23622.92

### RAILFAN VIDEO OF THE MONTH ON YOUTUBE

KCS M INTERCHANGE  
OPERATIONS & MORE ON CPKC



UP AT KANSAS CITY DEC 30,  
2025

### TRIVIA QUESTION OF THE MONTH

WHAT IS SIDE DOOR PULLMAN?

LOOK FOR ANSWER IN THIS MONTH'S  
NEWSLETTER

## **AREA MODEL RAILROAD CLUBS**

### **COWTOWN MODEL RAILROAD CLUB**

MEETS AT THE HANDLEY  
COMMUNITY CENTER, UPSTAIRS 3024  
FOREST AVE, FT WORTH,

WEBSITE <https://www.cmrrc.net>

### **CLMRR**

MEETS TUESDAYS, THURSDAYS &  
SATURDAYS

THE LAYOUT IS LOCATED AT 3904  
VISTA RIDGE LN

ALVARADO, TX 76009

FOR INFO CONTACT LEE MARTIN AT  
817-666-5367

### **DALLAS/FT WORTH O SCALE CLUB**

NORMALLY MEETS TWO SATURDAYS  
PER MONTH IN RICHARDSON

CONTACT TO BE IDENTIFIED

[bradyprmla@cableone.net](mailto:bradyprmla@cableone.net)

STAN SCHWARTZ [ss124@sbcglobal.net](mailto:ss124@sbcglobal.net)

### **DENTON AREA MODEL RAILROAD CLUB**

MEETS 2<sup>ND</sup> TUESDAY OF EVERY  
MONTH AT 6:45 PM IN THE DENTON  
SENIOR CITIZEN CENTER  
DOWNTOWN

HO & N SCALE MODULAR LAYOUTS

<https://www.facebook.com/damrrc/>

### **NORTH TEXAS CHAPTER OF NATIONAL RAILWAY HISTORICAL SOCIETY**

Chill Bar & Grill (Cotton Belt Room)

814 South Main Street

Grapevine, Texas 76051

(NW Corner of S. Main St. & Dallas Rd.)

Our new meeting hours are 7:30 pm - 9:30  
pm. We still meet every first Tuesday of the  
month.

<https://ntxnrhs.org>

### **TEXAS WESTERN MODEL RAILROAD CLUB**

LOCATED AT 6808 FOREST HILL, 76140

VISITOR HOURS: SEE CLUB WEBSITE

[https://www.facebook.com/texaswesternmod  
elrailroad club](https://www.facebook.com/texaswesternmodelrailroadclub)

<https://www.twmrrc.org>

### **TRINITY N-TRK**

MEETS AT HOBBY WORLD, FT WORTH  
AT 6:30PM

CHECK WEBSITE FOR TIME

<https://www.trinityntrak.com>

### **TNMRC**

MEETS AT 11999 PLANO RD, SUITE 154,  
DALLAS 75243

<https://www.texasnorthern.org>

*The Whistle Apr 2026 pg 7*

ANGELO HOBBIES

5600 RUFÉ SNOW DRIVE #106  
NORTH RICHLAND HILLS 76180

DISCOUNT MODEL TRAINS

4641 RATLIFF LN  
ADDISON 75001

MODEL TRAIN CROSSING

*NEW ADDRESS 1 OCT*

7801 Brandi Lane  
North Richland Hills

HOBBYTOWN USA

746 GRAPEVINE HWY  
HURST 76054

HOBBYTOWN USA

500 E. ROUND GROVE RD  
LEWISVILLE 75067

WILD BILL'S HOBBYTOWN USA

1112 W. ARBROOK BLVD  
ARLINGTON 76015

**NMRA POLICY STATEMENT**

*EFFECTIVE MARCH 31, 2020, IN ACCORDANCE WITH THE POLICY ADOPTED BY THE NATIONAL MODEL RAILROAD ASSOCIATION AT ITS BOARD MEETING ON MARCH 7, 2020, DIVISION 1 OF THE LONE STAR REGION OF THE NMRA, COMMONLY KNOWN AS THE COWCATCHER DIVISION, WILL REQUIRE ANYONE UNDER THE AGE OF 18, WISHING TO ATTEND ANY DIVISION EVENT, TO BE PERSONALLY ESCORTED BY THEIR PARENT OR LEGAL GUARDIAN.*

*ADDITIONALLY, PARENT OR LEGAL GUARDIAN MUST SIGN A CURRENT DOCUMENT STATING THAT THEY WILL REMAIN IN VISUAL CONTACT WITH THEIR MINOR AT ALL TIMES.*

SHOW & TELL



DIVISION PRESENTING CHECK  
TO TEXAS WESTERN CLUB



*The Whistle Apr 2026 page 9*



EDITOR'S CORRECTION:

WE MISSPELLED JIM PACKER IN  
LAST ISSUE

The Argo Mill on Jim Packer's  
Nevadun Railroad

*The Whistle Apr 2026 page 10*

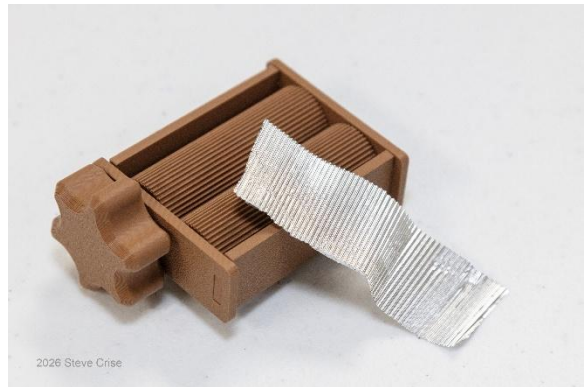


DEAL OR DUD



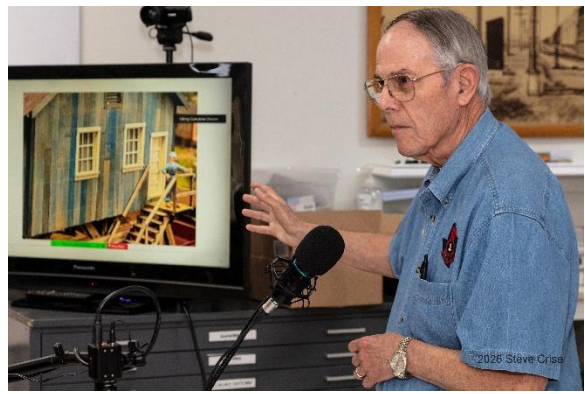


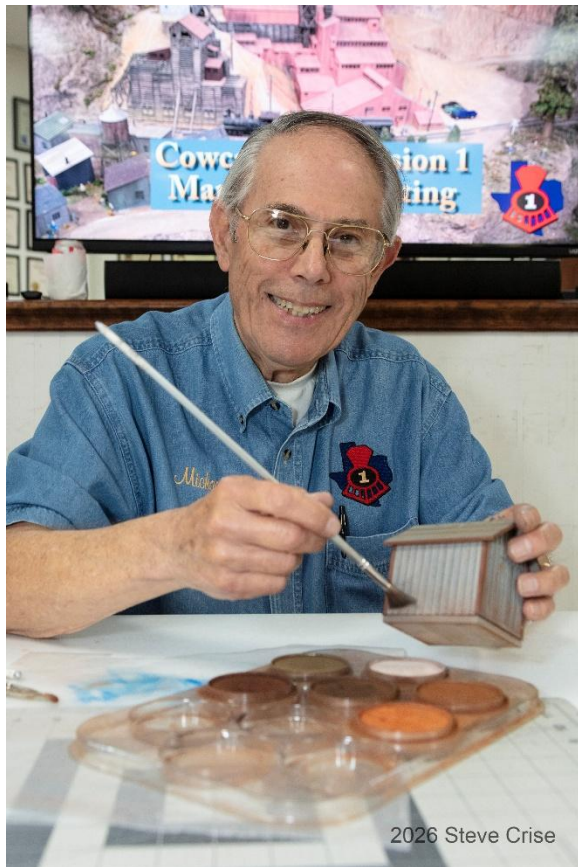
**SHOW & TELL**



*The Whistle Apr 2026 page 13*

MARCH CLINIC  
WEATHERING WITH  
PAAN PASTELS





TO VIEW ENTIRE CLINIC  
GO TO YOUTUBE,  
COWCATCHER MARCH 2026  
1:04:44

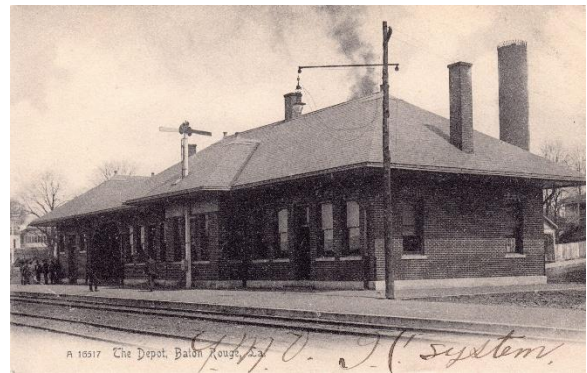
ANSWER TO THIS MONTH'S  
TRIVIA QUESTION:  
BOXCAR

*The Whistle Apr 2026 page 15*

## APRIL CLINIC

SCRATCH BUILDING A  
FREELANCE RAILROAD  
STATION

PRESENTED BY MIKE WALTER.



DEPOT BATON ROUGE



T&P DEPOT  
ABILENE TX

*The Whistle Apr 2026 page 16*

A SURVEY HISTORY OF RAILROADS IN TEXAS, from the article found in the Texas Historical Association Handbook of Texas online, part 4.

The Houston and Great Northern Railroad Company was the first major new railroad to start construction after the war. Beginning at Houston in December 1870, the company reached Palestine in September 1872. During the same period the International Railroad Company built from Hearne to Palestine and on to Longview. The two companies merged to form the International and Great Northern Railroad Company in 1873.



By 1876 the International and Great Northern had completed a line from Hearne to Austin. In northeast Texas the Texas and Pacific Railway

Company acquired the Southern Pacific and the Memphis, El Paso and Pacific and finished a line from Texarkana to Dallas and Fort Worth.



Other lines constructed during the decade included the extension of the Galveston, Harrisburg and San Antonio Railway Company, formerly the Buffalo Bayou, Brazos and Colorado, from Columbus to San Antonio during the years 1873 to 1877. The Texas and New Orleans, which totally shut down in 1868, briefly reopened in 1870 before discontinuing service again. By 1876 the company had been rebuilt and was again operating between Houston and Orange. Work also began on the Gulf, Colorado and Santa Fe Railway Company as well as on several shorter railroads, including the Houston East and West Texas Railway Company and the East Line and Red River Railroad Company.

By the end of 1879 railroad mileage in Texas had reached 2,440 miles. The railroad system in eastern Texas was becoming well developed, but there was less than 100 miles of track west of a line drawn from Denison through Fort Worth, Austin, San Antonio, and

Cuero. All this was about to change as during the next ten years more than 6,000 miles of railroad was constructed in the state. More than 4,000 miles was built during the years 1881, 1882, and 1887 alone. Between 1880 and early 1883 both the Galveston, Harrisburg and San Antonio and the Texas and Pacific built across West Texas to El Paso, forming two transcontinental routes across the state. Another major line built during this period was the Fort Worth and Denver City Railway Company, which stretched from Fort Worth to the New Mexico border, thus becoming the Texas portion of a line to Denver. Other major additions included the extension of the International and Great Northern to San Antonio and Laredo and the completion of the main line of the Gulf, Colorado and Santa Fe.

Next Month part 5.



*The Whistle Apr 2026 page 18*



27 JULY- 2 AUGUST  
2026



**The Lone Star Region NMRA Convention  
is returning to Austin!**  
*June 18-21, 2026*  
at the  
Wyndham Garden Austin  
3401 South Interstate 35 • Austin, TX 78741

Dozens of Clinics • Operating Sessions • Layout Tour  
Special Guest Clinicians and Keynote Speaker  
Huge Contest Room • Silent Auction • Raffle • Great Location

Come join the fun - you don't have to be an NMRA member  
*Register Today!*  
[Connections2026.com](http://Connections2026.com)